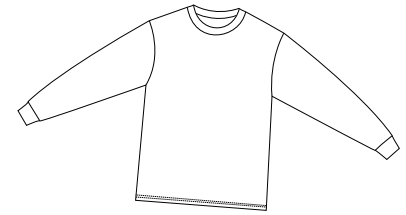
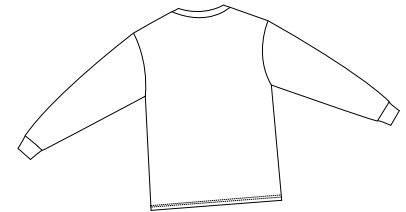


# 100% Cotton Essential Long Sleeve T-Shirt

PORT & COMPANY®



Front



Back

PC61LS

- \* 6.1-ounce 100% cotton \* Taped shoulder to shoulder \* Coverseamed neck
- \* Double-needle and Bottom hem

**Care Instructions:**  
Machine wash cold, inside out, with like colors. Only non-chlorine bleach when needed. Tumble dry medium. Medium-hot iron. Do not iron decoration.

## Finished Measurements in Inches

Size	S	M	L	XL	2XL	3XL	4XL
Neck	6.75	6.75	7.25	7.25	7.75	7.75	7.75
Width	18	20	22	24	26	28	30
Length	27	29	30	31	33	34.5	36
Sleeve	31.25	33.5	35.5	37.75	40	42.25	44.5

Neck measured by width, seam to seam. Chest width measured 1" below arm hole. Pocket measured HxW.  
Body length measured from high point of shoulder to hem. Sleeve length measured from center back to hem.

## Colors

White
Lights
Ash**
Darks
Athletic Heather
Athletic Maroon
Black
Dark Green
Kelly
Navy
Purple
Red
Royal
Stonewashed Blue
Stonewashed Green

**Please Note:**  
Colors shown are approximate and for reference only. For closest match see PMS colors, or for exact match, returnable samples and grommeted samples are available.

## Color Chart

Colors	Ash	Athletic Heather	Athletic Maroon	Black	Dark Green	Kelly	Navy	Purple
PMS	No Match	No Match	229C	Process Black	5535C	340C	296C	273C
Colors	Red	Royal	Stonewashed Blue	Stonewashed Green	White			
PMS	200C	661C	5414C	414C	No Match			