



Span the divide between dressy and casual with this versatile v-neck sweater vest that pairs easily with slacks or jeans.

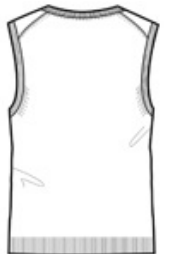
- 60/40 cotton/nylon
- Rib knit v-neck, armholes and hem

**CARE INSTRUCTIONS**

Wash cold with like colors, non-chlorine bleach if necessary, lay flat to dry.



front



back

**HOW TO MEASURE**



**CHEST WIDTH**

Measure under the arm and around the fullest part of the chest with arms down, keeping tape horizontal.

**SIZE CHART**

|       | XS    | S     | M     | L     | XL    | 2XL   | 3XL   | 4XL   |
|-------|-------|-------|-------|-------|-------|-------|-------|-------|
| Chest | 32-34 | 35-37 | 38-40 | 41-43 | 44-46 | 47-49 | 50-53 | 54-57 |

**COLOR INFORMATION**



Black  
PMS BLACK C



Charcoal Heather  
PMS 426C



Navy  
PMS 532C