

SPORT-TEK®

DISCONTINUED Sport-Tek® Heather Contender™ Contrast Polo. ST667



Our moisture-wicking, snag-resistant favorite with a more subtle colorblock design.

- 3.8-ounce, 100% polyester jersey
- 3.8-ounce, 100% polyester interlock collar, placket and cuffs
- Removable tag for comfort and relabeling
- Self-fabric collar
- Taped neck
- 3-button placket with dyed-to-match buttons
- Contrast colorblocking at collar, placket and cuffs
- Set-in, open hem sleeves

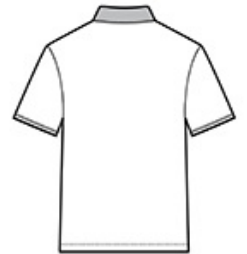
Due to the nature of 100% polyester performance fabrics, special care must be taken throughout the printing process.

CARE INSTRUCTIONS

Machine wash cold with like colors. Do not bleach. Do not use softener. Tumble dry low. Remove promptly. Cool iron if needed. Do not dry clean.



front



back

HOW TO MEASURE



CHEST WIDTH

Measure under the arm and around the fullest part of the chest with arms down, keeping tape horizontal.

SIZE CHART

	XS	S	M	L	XL	2XL	3XL	4XL
Chest	32-34	35-37	38-40	41-43	44-46	47-49	50-53	54-57

COLOR INFORMATION