

**SPORT-TEK®**

## Sport-Tek® Endeavor 1/2-Zip Pullover. ST469



With a subtle heather texture and moisture-wicking technology, this lightweight 1/2-zip will help you achieve all your performance endeavors.

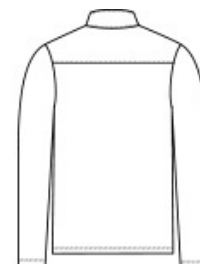
- 4.4-ounce, 100% polyester
- Tag-free label

### CARE INSTRUCTIONS

Machine wash cold with like colors. Do not use fabric softener. Do not bleach. Tumble dry low. Remove promptly. Cool iron if needed. Do not dry clean.

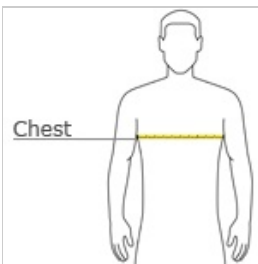


front



back

### HOW TO MEASURE



#### CHEST WIDTH

Measure under the arm and around the fullest part of the chest with arms down, keeping tape horizontal.

### SIZE CHART

|       | XS    | S     | M     | L     | XL    | 2XL   | 3XL   | 4XL   |
|-------|-------|-------|-------|-------|-------|-------|-------|-------|
| Chest | 32-34 | 35-37 | 38-40 | 41-43 | 44-46 | 47-49 | 50-53 | 54-57 |

### COLOR INFORMATION



Black Heather  
PMS BLACK C



Dark Royal  
Heather  
PMS 2767C



Deep Navy  
Heather  
PMS 7547C



Light Grey Heather