



# Russell Outdoors™ Basin Jacket RU550

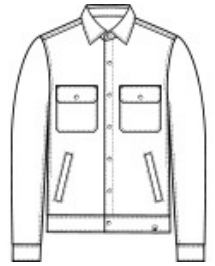


With its heavy wool-like feel, this jacket's the perfect outer layer. Reminiscent of aviator style jackets, it's ready to throw on over any Russell Outdoors™ tee-making it ideal for a casual office vibe, corporate retreat or favorite hike.

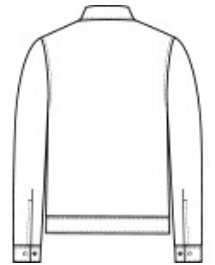
- 12-ounce, 100% polyester
- Folded collar
- Full snap front w ith branded metal snaps
- 2 chest pockets w ith branded metal snaps
- Side pockets
- Banded fitted hem
- Exterior embossed faux leather tab at hem

### CARE INSTRUCTIONS

Machine Wash Warm With Like Colors. Only Non-Chlorine Bleach When Needed. Tumble Dry Low . Do Not Iron.



front



back

### HOW TO MEASURE



#### CHEST WIDTH

Measure under the arm and around the fullest part of the chest w ith arms down n, keeping tape horizontal.

### SIZE CHART

	XS	S	M	L	XL	2XL	3XL	4XL
Chest	32-34	35-37	38-40	41-43	44-46	47-49	50-53	54-57

### COLOR INFORMATION

Please note: PMS code information is shown only when an exact match is available.



Deep Black Plaid



Graphite Heather



Red Plaid