

**Port & Company® Youth Fan Favorite Fleece Pullover Hooded Sweatshirt. PC850YH**

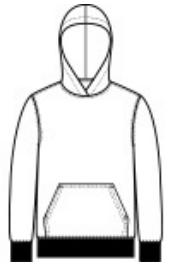


You'll be the biggest fan of this smooth-faced fleece.

- 8.5-ounce, 80/20 ring spun cotton/poly
- 75/25 ring spun cotton/poly (Athletic Heather)
- 50/50 ring spun cotton/poly (Dark Heather Grey)
- 100% ring spun cotton face (except Athletic Heather and Dark Heather Grey)
- Removable tag for comfort and relabeling
- Locker patch
- Twill-taped neck
- Front pouch pocket
- No draw cord at hood
- Ideal for direct to garment (DTG) printing

**CARE INSTRUCTIONS**

Machine wash cold. Inside out with like colors. Only non-chlorine bleach when needed. Tumble dry low. Do not iron.



front



back

**HOW TO MEASURE**



**CHEST WIDTH**

Measure under the arm and around the fullest part of the chest with arms down, keeping tape horizontal.

**SIZE CHART**

	XS	S	M	L	XL
Size	4	6/8	10/12	14/16	18/20
Chest	25-26	26-28	28-30	30-32	32-35

**COLOR INFORMATION**

Please note: PMS code information is shown only when an exact match is available.



Athletic Heather  
PMS COOL GRAY  
7C



Bright Red  
PMS 186C



Charcoal  
PMS COOL GRAY  
11C



Dark Heather Grey  
PMS 7540C



Jet Black  
PMS BLACK C



Team Navy  
PMS 2766C



True Royal  
PMS 7687C



White