

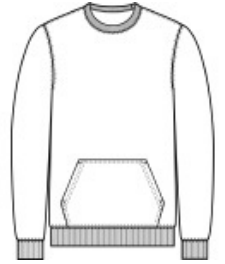
**Port & Company® Core Fleece Crewneck Pocket
Sweatshirt PC78PKT**

You asked. We listened. Now a cozy crew sweatshirt with a pocket in our core weight.

- 7.8-ounce, 50/50 cotton/poly fleece
- Air jet yarn for softness
- Front pouch pocket
- Tear-away label

CARE INSTRUCTIONS

Machine Wash Cold. Do Not Bleach. Tumble Dry Low. Cool Iron If Necessary.



front



back

HOW TO MEASURE



CHEST WIDTH

Measure under the arm and around the fullest part of the chest with arms down, keeping tape horizontal.

SIZE CHART

| | S | M | L | XL | 2XL | 3XL | 4XL |
|-------|-------|-------|-------|-------|-------|-------|-------|
| Chest | 35-37 | 38-40 | 41-43 | 44-46 | 47-49 | 50-53 | 54-57 |

COLOR INFORMATION



Athletic Heather
PMS COOL GRAY
7C



Dark Heather Grey
PMS 7540C



Jet Black
PMS BLACK C



Oatmeal Heather



Olive Drab Green
PMS 7771C



True Navy
PMS 533C



True Royal
PMS 7687C



White