



A pattern of dark, inky single-color hues mixed with color-on-color tones makes this fleece hoodie a true tie-dye standout.

- 7.8-ounce, 80/20 cotton/poly fleece
- 100% cotton face
- Sewn with dyeable thread
- Individually hand dyed
- Self-fabric lined hood
- Dyed-to-match draw cords
- Front pouch pocket
- Removable tag for comfort and relabeling

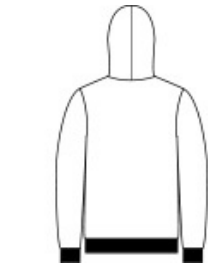
The tie-dye process infuses each garment with unique character. Please allow for slight color variation.

CARE INSTRUCTIONS

Machine Wash Cold Inside Out With Like Colors. Only Non-Chlorine Bleach When Needed. Tumble Dry Low. Do Not Iron.



front



back

HOW TO MEASURE



CHEST WIDTH

Measure under the arm and around the fullest part of the chest with arms down, keeping tape horizontal.

SIZE CHART

| | S | M | L | XL | 2XL | 3XL | 4XL |
|-------|-------|-------|-------|-------|-------|-------|-------|
| Chest | 35-37 | 38-40 | 41-43 | 44-46 | 47-49 | 50-53 | 54-57 |

COLOR INFORMATION

Please note: PMS code information is shown only when an exact match is available.



Black/ White



Graphite/ Light Grey



Green Tea/ Black



True Navy / White



Turquoise/ Team Navy