



# OGIO® Extend Long Sleeve Button-Up OG161



Extend your casual wardrobe with this OGIO knit shirt that has mechanical stretch. The heathered fabric has a subtle pinstripe effect that's evident in the inside collar, locker loop and at the side seam gussets.

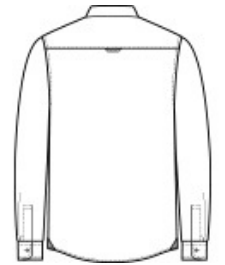
- 4-ounce, 65/35 poly/cotton knit
- OGIO heat transfer label for tag-free comfort
- Open collar
- Sandwiched tonal buttons
- Left chest pocket with woven OGIO tab
- Back locker loop
- Cuffed sleeves
- Slightly curved hem
- Shirrtail hem can be worn untucked

### CARE INSTRUCTIONS

Machine Wash Cold With Like Colors. Do Not Use Fabric Softener. Do Not Bleach. Tumble Dry Low. Remove Promptly. Cool Iron If Necessary.



front



back

### HOW TO MEASURE



#### CHEST WIDTH

Measure under the arm and around the fullest part of the chest with arms down, keeping tape horizontal.

### SIZE CHART

	XS	S	M	L	XL	2XL	3XL	4XL
Chest	32-34	35-37	38-40	41-43	44-46	47-49	50-53	54-57

### COLOR INFORMATION



Blacktop  
PMS BLACK C



Blacktop Heather  
PMS BLACK C



Deep Blue Heather