



# OGIO® Commuter Woven Shirt. OG1002



Developed for the modern commuter, this shirt has the style and functionality needed for work, travel and every stop in-between.

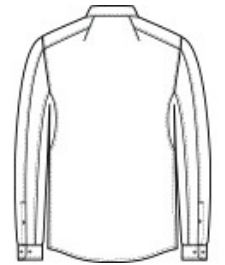
- 3.8-ounce, 56/38/6 cotton/poly/spandex
- Open collar
- Mitered woven label
- Angled shoulder yoke with back seaming
- Pliced sleeves with underarm panels
- Button-through sleeve plackets
- Two-button adjustable cuffs
- Woven OGIO badge at front hem
- Shirttail hem can be worn untucked

### CARE INSTRUCTIONS

Machine wash cold with like colors, only non-chlorine bleach if needed. Tumble dry low, warm iron if needed.



front



back

### HOW TO MEASURE



#### CHEST WIDTH

Measure under the arm and around the fullest part of the chest with arms down, keeping tape horizontal.

### SIZE CHART

	XS	S	M	L	XL	2XL	3XL	4XL
Chest	32-34	35-37	38-40	41-43	44-46	47-49	50-53	54-57

### COLOR INFORMATION

Please note: PMS code information is shown only when an exact match is available.



Blacktop  
PMS BLACK C



Gear Grey Heather  
PMS COOL GREY  
10C



Metal Blue Heather  
PMS 644C



White