



# OGIO® Brink Soft Shell. OE722

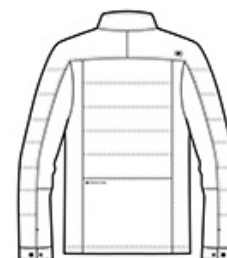


PERFORMANCE HYBRID  
WATER-RESISTANT  
WIND-RESISTANT

- 100% poly w oven shell bonded to a 100% poly knit back with a laminated film insert for wind and water resistance
- 100% poly w oven quilted overlays
- Core insulation
- Zip-through cadet collar
- Reflective OGIO heat transfer label for tag-free comfort
- Tonal rubber O at back right shoulder
- Rubber O at back left panel
- Reverse coil zippers
- Rubber-wrapped O zipper pull
- OGIO metal snap
- Set-in sleeves
- Tonal rubber O at left sleeve
- OGIO snap closure cuffs
- Decoration access pocket
- Front zippered pockets

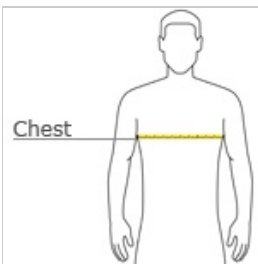


front



back

## HOW TO MEASURE



### CHEST WIDTH

Measure under the arm and around the fullest part of the chest with arms down, keeping tape horizontal.

## SIZE CHART

	XS	S	M	L	XL	2XL	3XL	4XL
Chest	32-34	35-37	38-40	41-43	44-46	47-49	50-53	54-57

## COLOR INFORMATION

Please note: PMS code information is shown only when an exact match is available.



Blacktop  
PMS BLACK C