



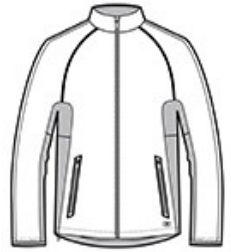
ALLOVER REFLECTION

WATER-RESISTANT

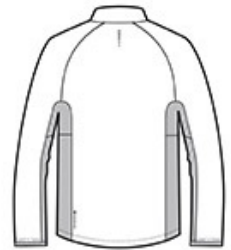
WIND-RESISTANT

DESIGNED FOR DAY-INTO-NIGHT ACTIVE PURSUITS LIKE RUNNING & CYCLING

- 100% poly shell w ith mesh lining
- Reflective OGIO heat transfer label for tag-free comfort
- Zip-through cadet collar
- Reverse coil zippers w ith locking pulls
- Contrast stacked O heat transfer at center back
- Raglan sleeves
- Elastic cuffs
- Front zippered pockets w ith heat transfer w elding details
- Embroidery access pocket
- Slight drop tail hem w ith draw cord and toggle for adjustability
- Contrast O heat transfer at front left hem



front



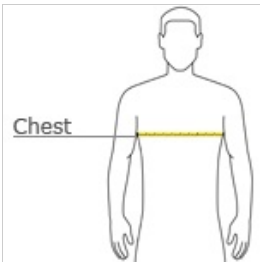
back

*Due to the nature of the highly technical fabric in the reflective shell, this jacket may be more sensitive to scratches and fading. Special care must be taken throughout the decorating process.*

**CARE INSTRUCTIONS**

Machine w ash cold separately, delicate cycle. Hang to dry. Do not bleach. Do not iron. Do not dry clean.

**HOW TO MEASURE**



**CHEST WIDTH**

Measure under the arm and around the fullest part of the chest w ith arms dow n, keeping tape horizontal.

**SIZE CHART**

	XS	S	M	L	XL	2XL	3XL	4XL
Chest	32-34	35-37	38-40	41-43	44-46	47-49	50-53	54-57

**COLOR INFORMATION**

Please note: PMS code information is shown only when an exact match is available.



Reflective/  
Blacktop