



# OGIO® Origin Jacket. OE503

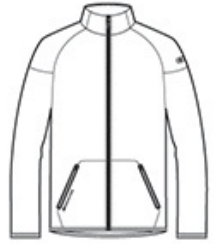


COTTON-RICH SOFTNESS  
STAY-COOL WICKING  
LAYERABLE WARMTH

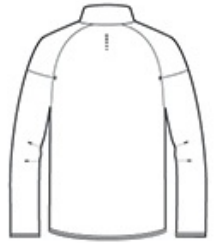
- 8.1-ounce, 64/36 cotton/poly flatback knit
- OGIO heat transfer label for tag-free comfort
- Zip-through collar
- Exposed coil zipper w ith molded cord pull
- Stacked O heat transfers at center back
- Welded front zippered pockets w ith locking pulls
- O heat transfer at right pocket
- Raglan sleeves w ith welded, articulated elbow s
- O heat transfer at upper left sleeve
- OGIO binding at cuffs and hem
- Slight drop tail hem

### CARE INSTRUCTIONS

Machine w ash cold w ith like colors. Remove promptly. Only non chlorine bleach w hen needed. Tumble dry low . Cool iron if needed. Do not dry clean



front



back

### HOW TO MEASURE



#### CHEST WIDTH

Measure under the arm and around the fullest part of the chest w ith arms dow n, keeping tape horizontal.

### SIZE CHART

|       | XS    | S     | M     | L     | XL    | 2XL   | 3XL   | 4XL   |
|-------|-------|-------|-------|-------|-------|-------|-------|-------|
| Chest | 32-34 | 35-37 | 38-40 | 41-43 | 44-46 | 47-49 | 50-53 | 54-57 |

### COLOR INFORMATION

Please note: PMS code information is shown only when an exact match is available.



Aluminum Grey  
PMS COOL GRAY  
8C



Blacktop  
PMS BLACK C