



DISCONTINUED OGIO® Sleeveless Pulse Crew. OE322

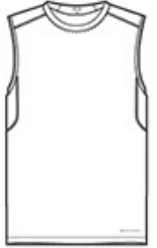


STAY-COOL WICKING
ULTRA-BREATHABLE
FLATLOCK SEAMS FOR COMFORT
REFLECTIVE DETAILS

- 4-ounce, 100% poly jersey body with stay-cool wicking technology
- 4.1-ounce, 100% poly mesh back panel
- Self-fabric collar
- Reflective O heat transfer at back neck
- Reflective stacked O heat transfers at lower back panels
- OGIO heat transfer label for tag-free comfort
- Reflective O heat transfer at front left hem

CARE INSTRUCTIONS

Machine wash cold with like colors. Do not bleach. Do not use fabric softener. Tumble dry low, remove promptly. Cool iron if needed. Do not dry clean.



front



back

HOW TO MEASURE



CHEST WIDTH

Measure under the arm and around the fullest part of the chest with arms down, keeping tape horizontal.

SIZE CHART

	XS	S	M	L	XL	2XL	3XL	4XL
Chest	32-34	35-37	38-40	41-43	44-46	47-49	50-53	54-57

COLOR INFORMATION

Please note: PMS code information is shown only when an exact match is available.