



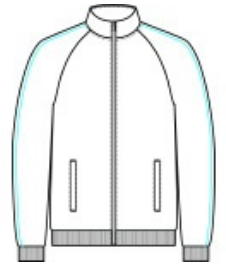
# Nike Track Jacket NKFQ4758



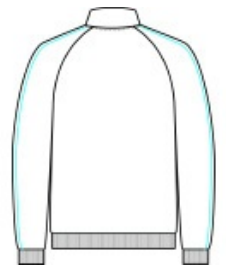
With dual white piping down the sleeves on all colors, this track jacket is a Nike icon. Details include a zip-through cadet collar, dyed-to-match zipper and dyed-to-match zippered front pockets. The contrast embroidered Swoosh logo is on the center back, below the collar. Made of 8.7-ounce, 100% polyester.

### CARE INSTRUCTIONS

Wash Inside Out. Wash With Like Colors. Fasten All Closures To Wash And Dry. Do Not Use Softeners. Do Not Allow To Lay On Itself When Wet. Remove Immediately.



front



back

### HOW TO MEASURE



#### CHEST WIDTH

Measure under the arm and around the fullest part of the chest with arms down, keeping tape horizontal.

### SIZE CHART

	XS	S	M	L	XL	2XL	3XL	4XL
Chest	32-35	35-37 1/2	37 1/2-41	41-44	44-48 1/2	48 1/2 -53 1/2	53 1/2 - 58	58-63

### COLOR INFORMATION

Please note: PMS code information is shown only when an exact match is available.



Black  
PMS BLACK C



Cool Grey  
PMS 424C



Game Royal  
PMS 7617C



Navy  
PMS 533C