



# Nike Therma-FIT Pocket 1/4-Zip Fleece Hoodie NKFD9742



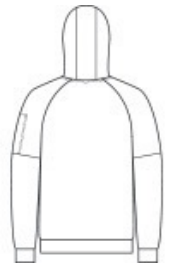
This 1/4-zip hoodie with a zippered left arm pocket brings the heat to your workout with Therma-FIT fabric. Therma-FIT helps manage your body's natural heat to keep warm in cold-weather conditions. The design includes a three-panel hood with black draw cords, a dyed-to-match zipper and a front pouch pocket. Self-fabric cuffs and hem. A contrast Swoosh logo is embroidered on left sleeve. A contrast Therma-FIT logo is embroidered on back hem. Made of 7.4-ounce polyester Therma-FIT fabric with at least 50% recycled content.

### CARE INSTRUCTIONS

Machine Wash Cold. Wash Inside Out. Wash With Like Colors. Do Not Use Softeners. Do Not Use Bleach. Tumble Dry Low. Do Not Iron. Do Not Dry Clean.



front



back

### HOW TO MEASURE



#### CHEST WIDTH

Measure under the arm and around the fullest part of the chest with arms down, keeping tape horizontal.

### SIZE CHART

	XS	S	M	L	XL	2XL	3XL	4XL
Chest	32-35	35-37 1/2	37 1/2-41	41-44	44-48 1/2	48 1/2 -53 1/2	53 1/2 - 58	58-63

### COLOR INFORMATION

Please note: PMS code information is shown only when an exact match is available.



Anthracite  
PMS 432C



Black  
PMS BLACK C



Charcoal Heather  
PMS 425C



Dark Grey Heather  
PMS 422C



Game Royal  
PMS 2758C



Navy  
PMS 533C



White