



Nike Dri-FIT Vapor Space Dyed Polo NKDC2109



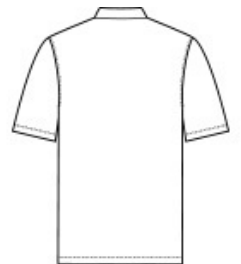
A modern striated space dyed pattern combined with unparalleled Dri-FIT moisture management technology makes this contemporary polo fashionable and functional. Features a self-fabric collar and two-button placket. Rolled-forward shoulder seams, open hem sleeves and open hem. A contrast heat transfer swoosh logo is on the left sleeve. Made of 4.7-ounce, 100% polyester Dri-FIT fabric.

CARE INSTRUCTIONS

Machine Wash Cold. Wash Inside Out. Wash With Like Colors. Do Not Use Softeners. Do Not Use Bleach. Tumble Dry Low. Do Not Iron. Do Not Dry Clean.



front



back

HOW TO MEASURE



CHEST WIDTH

Measure under the arm and around the fullest part of the chest with arms down, keeping tape horizontal.

SIZE CHART

| | XS | S | M | L | XL | 2XL | 3XL | 4XL |
|-------|-------|-----------|-----------|-------|-----------|----------------|-------------|-------|
| Chest | 32-35 | 35-37 1/2 | 37 1/2-41 | 41-44 | 44-48 1/2 | 48 1/2 -53 1/2 | 53 1/2 - 58 | 58-63 |

COLOR INFORMATION



Anthracite
PMS 432C



Navy
PMS 296C