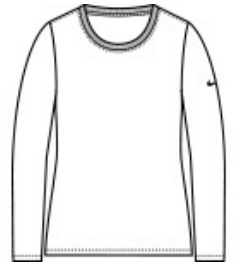




DISCONTINUED Nike Ladies Core Cotton Long Sleeve Scoop Neck Tee. NKBQ5235



The Nike Core Cotton Tee is made of pure cotton for all-day comfort and lasting wear. Durable rib knit scoop neck w ith interior taping. Heat transfer label for tag-free comfort. Double-needle stitching throughout. Contrast heat transfer Sw oosh design trademark on left sleeve. Open cuffs. Made of 4.6-ounce, 100% ring spun cotton (solid colors), 4.4-ounce, 80/20 ring spun cotton/polyester (Dark Grey Heather).**

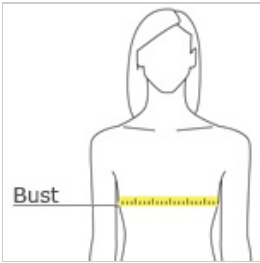


front



back

HOW TO MEASURE



BUST

Measure under the arm and around the fullest part of the bust w ith arms down n, keeping tape horizontal.

SIZE CHART

	S	M	L	XL	2XL
Size	4/6	8/10	12/14	16/18	20/22
Chest	32 1/2-35 1/2	35 1/2 - 38	38-41	41-44 1/2	44 1/2 - 48 1/2

COLOR INFORMATION

Please note: PMS code information is shown only when an exact match is available.

