



# New Era® Performance Terry Full-Zip NEA530

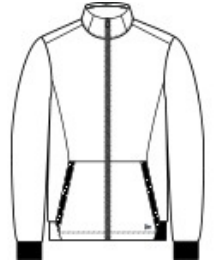


Perfect for year-round layering, this lightweight fleece style has a smooth face and soft terry backing for exceptional comfort.

- 6.5-ounce, 100% polyester French terry
- Heat transfer label for tag-free comfort
- Exposed Vislon® zipper
- Front seaming detail
- Front pouch pockets
- Embossed silicone New Era flag logo on left pocket
- 1x1 rib knit cuffs and hem

### CARE INSTRUCTIONS

Machine wash cold with like colors. Only non-chlorine bleach if needed. Tumble dry low, cool iron if necessary.



front



back

### HOW TO MEASURE



#### CHEST WIDTH

Measure under the arm and around the fullest part of the chest with arms down, keeping tape horizontal.

### SIZE CHART

	XS	S	M	L	XL	2XL	3XL	4XL
Chest	32-34	35-37	38-40	41-43	44-47	48-51	52-56	57-61

### COLOR INFORMATION



Black  
PMS BLACK C



Graphite Heather



True Navy Heather  
PMS 533C