



MERCER+METTLE®

# Mercer+Mettle® Puffy Jacket MM7210



Professional and polished while protecting from the elements, this lofty, high-performing puffy is intentionally designed to lend dependable warmth and transitional style for downtown or out-of-town. The DWR finish sheds moisture while the blown-in synthetic insulation gives the soft, lightweight and pliable effect of down with easy washability.

### Fabric+Weight

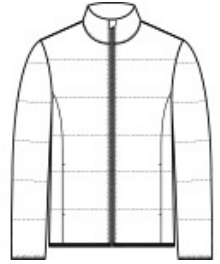
- 100% polyester
- 5K/3K waterproof breathable fabric
- 12-ounce, 100% polyester blown insulation

### Features+Benefits

- Zip-through collar
- Molded front zipper
- Hidden, zippered hand pockets
- Elastic binding at cuffs and hem

### CARE INSTRUCTIONS

Machine Wash Cold Gentle Cycle With Like Colors. Only Non-Chlorine Bleach When Needed. Tumble Dry Low. Cool Iron If Necessary. Do Not Dry Clean.

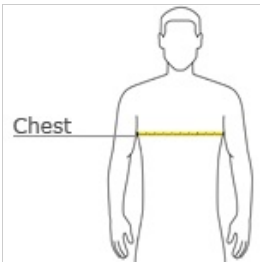


front



back

## HOW TO MEASURE



### CHEST WIDTH

Measure under the arm and around the fullest part of the chest with arms down, keeping tape horizontal.

## SIZE CHART

	2XL	3XL	4XL	XS	S	M	L	XL
Chest	48-51	52-56	57-61	32-34	35-37	38-40	41-43	44-47

## COLOR INFORMATION

Please note: PMS code information is shown only when an exact match is available.



Anchor Grey  
PMS 426C



Deep Black  
PMS BLACK C



Night Navy  
PMS 532C



Townsend Green