



A fine-wale Ottoman texture and front seaming details give a refreshing, trend-forward look to this layerable 1/4-zip. Designed to perform, this cotton-rich style is elevated and suitable for all-season dressing.

Fabric+Weight

- 9.7-ounce, 55/42/3 cotton/polyester/spandex ottoman knit

Features+Benefits

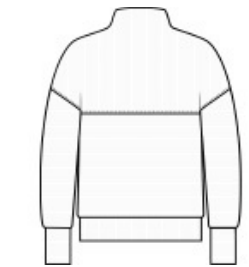
- Odor-fighting
- Front seaming
- Funnel neck and drop shoulders for a flattering, seamless look
- Metal zipper with metal pull
- Self-banded cuffs and hem
- Slightly boxy fit

CARE INSTRUCTIONS

Machine Wash Cold With Like Colors. Do Not Bleach. Tumble Dry Low. Warm Iron If Necessary.

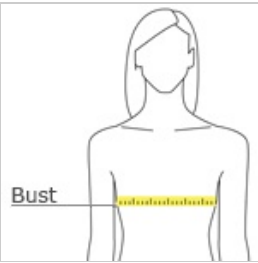


front



back

HOW TO MEASURE



BUST

Measure under the arm and around the fullest part of the bust with arms down, keeping tape horizontal.

SIZE CHART

	XS	S	M	L	XL	2XL	3XL	4XL
Size	2	4/6	8/10	12/14	16/18	20/22	24/26	28/30
Bust	32-34	35-36	37-38	39-41	42-44	45-47	48-51	52-55

COLOR INFORMATION

Please note: PMS code information is shown only when an exact match is available.



Deep Black
PMS BLACK C



Night Navy
PMS 532C



Storm Grey
PMS 7540C



Warm Taupe