



Boardroom-bound or loosely layered, this versatile twill overshirt combines the clean design of a blazer with just the right amount of stretch. The result fits in at work, at home and anywhere in-between.

**Fabric+Weight**

- 7.2-ounce, 69/29/2 poly/rayon/spandex stretch twill

**Features+Benefits**

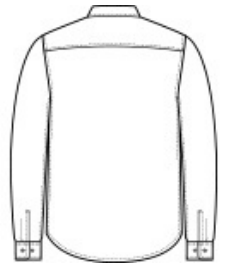
- Open collar
- Faux horn-rimmed buttons
- Double chest pockets with button flaps
- Adjustable rounded barrel cuffs
- Side seam pockets
- Shirt tail hem

**CARE INSTRUCTIONS**

Machine Wash Cold With Like Colors. Do Not Bleach. Tumble Dry Low. Remove Promptly. Cool Iron If Necessary.

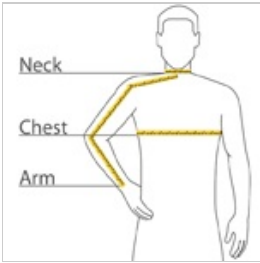


front



back

**HOW TO MEASURE**



**CHEST WIDTH**

Measure under the arm and around the fullest part of the chest with arms down, keeping tape horizontal.

**NECK**

Measure around the fullest part of the neck at the base.

**ARM**

Place hand on hip. Start at the center of the back of the neck and measure across the shoulder, to the elbow, and then down to the wrist.

**SIZE CHART**

	XS	S	M	L	XL	2XL	3XL	4XL
Chest	32-34	35-37	38-40	41-43	44-46	47-49	50-53	54-57
Neck	14 1/2 - 15	15 - 15 1/2	15 1/2 - 16	16 - 16 1/2	16 1/2 - 17	17 - 17 1/2	17 1/2 - 18	18 - 18 1/2
Arm	30 1/2	32	34	35	36 1/2	37 1/2	38 1/2	39 1/2

**COLOR INFORMATION**



Deep Black  
PMS Black C



Light Anchor Grey  
Heather