

PORT AUTHORITY

# Port Authority® Women's Easy Care Button-Up Cardigan Sweater LSW4150

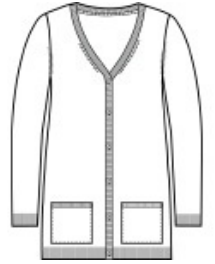


Blending professionalism with supreme comfort, this beautiful tri-blend sweater is an exceptional addition to any work wardrobe.

- 56/29/15 cotton/nylon/acrylic
- Fully-fashioned seams
- Machine washable
- 1x1 rib knit collar, cuffs and hem
- Dyed-to-match faux horn buttons
- Front pockets
- Longer length

#### CARE INSTRUCTIONS

Turn Garment Inside Out. Machine Wash Cold With Like Colors. Gentle Cycle. Only Non-Chlorine Bleach When Needed. Reshape And Lay Flat To Dry. Warm Iron If Needed.



front



back

#### HOW TO MEASURE



#### BUST

Measure under the arm and around the fullest part of the bust with arms down, keeping tape horizontal.

#### SIZE CHART

	XS	S	M	L	XL	XXL	3XL	4XL
Size	2	4/6	8/10	12/14	16/18	20/22	24/26	28/30
Bust	32-34	35-36	37-38	39-41	42-44	45-47	48-51	52-55

#### COLOR INFORMATION

Please note: PMS code information is shown only when an exact match is available.



Charcoal Heather  
PMS 7540C



Deep Black  
PMS Black C



River Blue Navy  
PMS 533C