

**SPORT-TEK®**

# Sport-Tek® Women's PosiCharge® Strive Full-Zip LST570

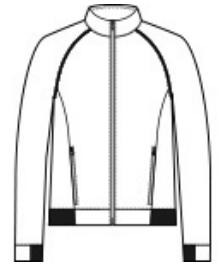


Achieve what you strive for in this elevated, moisture-wicking style that has a soft, natural hand and a slub appearance. PosiCharge technology keeps the colors strong and vibrant.

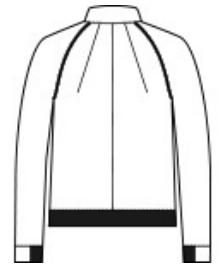
- 8.9-ounce, 90/10 poly/cotton fleece
- Tear-away removable label
- Cadet collar
- Raglan sleeves with coverstitching
- Zippered side pockets
- Half elastic, half self-fabric cuffs and hem for comfort
- Dart detail on back

### CARE INSTRUCTIONS

Machine Wash Cold With Like Colors. Do Not Use Fabric Softener. Do Not Bleach. Tumble Dry Low. Remove Promptly. Cool Iron If Needed. Do Not Dry Clean.



front



back

### HOW TO MEASURE



#### BUST

Measure under the arm and around the fullest part of the bust with arms down, keeping tape horizontal.

### SIZE CHART

	XS	S	M	L	XL	XXL	3XL	4XL
Size	2	4/6	8/10	12/14	16/18	20/22	24/26	28/30
Bust	32-34	35-36	37-38	39-41	42-44	45-47	48-51	52-55

### COLOR INFORMATION

Please note: PMS code information is shown only when an exact match is available.



Black



Graphite  
PMS COOL GRAY  
11C



True Navy  
PMS 533C



True Royal