

**SPORT-TEK®**

## Sport-Tek® Women's Endeavor Tee. LST465



With a subtle heather texture and mesh panels at targeted heat zones, this tee has moisture-wicking technology, breathability and stretch for optimum performance.

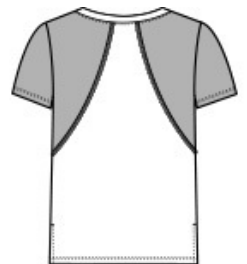
- 4-ounce, 100% polyester w ith PosiCharge technology
- Dyed-to-match neck band
- Mesh panels at shoulders and underarms
- Tag-free label
- Wide V-neck
- Side vents
- Drop tail hem

### CARE INSTRUCTIONS

Machine w ash cold w ith like colors. Do not use fabric softener. Do not bleach. Tumble dry low . Remove promptly. Cool iron if needed. Do not dry clean.



front



back

### HOW TO MEASURE



#### BUST

Measure under the arm and around the fullest part of the bust w ith arms dow n, keeping tape horizontal.

### SIZE CHART

	XS	S	M	L	XL	XXL	3XL	4XL
Size	2	4/6	8/10	12/14	16/18	20/22	24/26	28/30
Bust	32-34	35-36	37-38	39-41	42-44	45-47	48-51	52-55

### COLOR INFORMATION

Please note: PMS code information is shown only when an exact match is available.