

**SPORT-TEK®**

## Sport-Tek® Women's PosiCharge® Electric Heather Colorblock 1/4-Zip Pullover. LST397



This lightweight pullover locks in color, wicks moisture and has an amped up colorblock look.

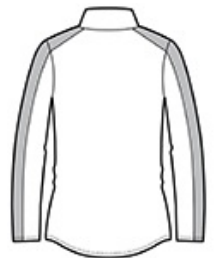
- 4.1-ounce, 100% polyester yarn-dyed jersey with PosiCharge technology (Electric Heather)
- 4.7-ounce, 100% polyester jersey with PosiCharge technology (solid)
- Removable tag for comfort and relabeling
- Cadet collar
- Reverse coil zipper
- Colorblock on shoulders and sleeves
- Princess seams
- Set-in sleeves
- Open cuffs and hem
- Drop tail hem

### CARE INSTRUCTIONS

Machine wash cold with like colors. Do not bleach. Tumble dry low. Remove promptly. Cool iron if needed. Do not use fabric softener. Do not dry clean.



front



back

### HOW TO MEASURE



#### BUST

Measure under the arm and around the fullest part of the bust with arms down, keeping tape horizontal.

### SIZE CHART

	XS	S	M	L	XL	XXL	3XL	4XL
Size	2	4/6	8/10	12/14	16/18	20/22	24/26	28/30
Bust	32-34	35-36	37-38	39-41	42-44	44-46	48-51	52-55

### COLOR INFORMATION

Please note: PMS code information is shown only when an exact match is available.



Black Electric/  
Black  
PMS BLACK C



Deep Red Electric/  
Deep Red  
PMS 201C



Grey-Black  
Electric/ Black  
PMS BLACK C



True Navy Electric/  
True Navy  
PMS 533C



True Royal  
Electric/ True  
Royal  
PMS 7686C