

SPORT-TEK®

Sport-Tek® Women's Lightweight French Terry Bomber LST274



Casual and soft, this cotton-rich bomber gives a classic silhouette an on-trend twist.

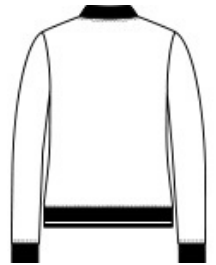
- 6.5-ounce, 59/41 combed ring spun cotton/poly French terry
- Tag-free label
- Front pockets
- 2x2 rib knit collar, cuffs and hem

CARE INSTRUCTIONS

Machine wash cold with like colors, only non-chlorine bleach if needed. Tumble dry low, cool iron if necessary.



front



back

HOW TO MEASURE



BUST

Measure under the arm and around the fullest part of the bust with arms down, keeping tape horizontal.

SIZE CHART

| | XS | S | M | L | XL | XXL | 3XL | 4XL |
|------|-------|-------|-------|-------|-------|-------|-------|-------|
| Size | 2 | 4/6 | 8/10 | 12/14 | 16/18 | 20/22 | 24/26 | 28/30 |
| Bust | 32-34 | 35-36 | 37-38 | 39-41 | 42-44 | 45-47 | 48-51 | 52-55 |

COLOR INFORMATION

Please note: PMS code information is shown only when an exact match is available.



Black
PMS BLACK C



Ecu



Heather Black
PMS 426C