



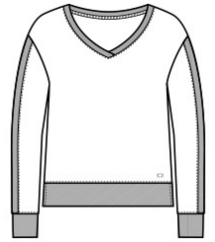
OGIO® Ladies Luuma Flex Long Sleeve V-Neck LOG825

Cozy but refined, this OGIO look is elevated enough for the office but also perfect for travel.

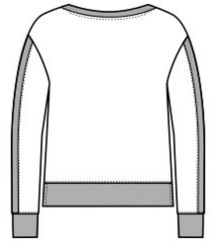
- 7.1-ounce, 57/38/5 modal/poly/spandex French terry
- OGIO heat transfer label for tag-free comfort
- Rib knit bound collar, cuffs and hem
- Piped rib sleeve details
- Side slits
- Iridescent heat transfer O on front left hem

CARE INSTRUCTIONS

Machine Wash Cold With Like Colors. Do Not Use Fabric Softener. Only Non-Chlorine Bleach When Needed. Tumble Dry Low. Remove Promptly. Cool Iron If Necessary.



front



back

HOW TO MEASURE



BUST

Measure under the arm and around the fullest part of the bust with arms down, keeping tape horizontal.

SIZE CHART

	XS	S	M	L	XL	2XL	3XL	4XL
Size	2	4/6	8/10	12/14	16/18	20/22	24/26	28/30
Bust	32-34	35-36	37-38	39-41	42-44	45-47	48-51	52-55

COLOR INFORMATION



Blacktop
PMS BLACK C



Ivory Snow



Petrol Grey
Heather
PMS COOL GREY
10C