



# OGIO® Women's Transition Full-Zip. LOG821

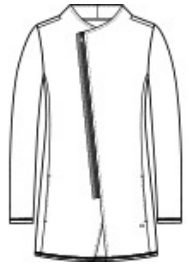


Transition easily between a corporate look and afterhours style in this double-knit piece that has OGIO edge.

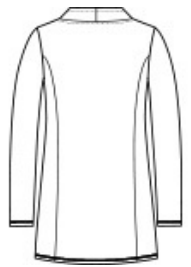
- 11.4-ounce, 52/45/3 cotton/poly/spandex fleece
- OGIO heat transfer label for tag-free comfort
- Black grosgrain detail at zipper
- Asymmetrical metal molded zipper with debossed O on zipper pull
- Matte black debossed O metal badge on front left hem
- Longer tunic length

### CARE INSTRUCTIONS

Machine wash with like colors. Only non-chlorine bleach, when needed. Tumble dry low. Cool iron, if necessary.

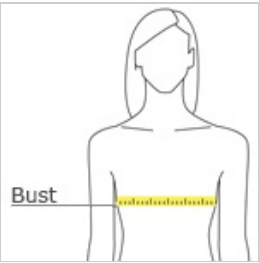


front



back

### HOW TO MEASURE



#### BUST

Measure under the arm and around the fullest part of the bust with arms down, keeping tape horizontal.

### SIZE CHART

	XS	S	M	L	XL	2XL	3XL	4XL
Size	2	4/6	8/10	12/14	16/18	20/22	24/26	28/30
Bust	32-34	35-36	37-38	39-41	42-44	45-47	48-51	52-55

### COLOR INFORMATION

Please note: PMS code information is shown only when an exact match is available.



Blacktop Heather  
PMS BLACK C



Petrol Grey  
Heather  
PMS COOL GREY  
10C