



# OGIO® Ladies Luuma Tank. LOG801



This versatile tank drapes for easy movement.

- 4.1-ounce, 75/20/5 poly/TENCEL™ Lyocell/spandex jersey with stay-cool wicking technology
- OGIO heat transfer label for tag-free comfort
- Self-fabric neck and armholes
- Keyhole details at back
- Iridescent heat transfer O on front left hem
- Side vents

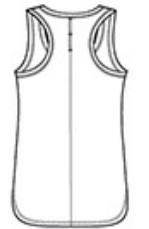
TENCEL is a trademark of Lenzing AG.

### CARE INSTRUCTIONS

Machine wash cold with like colors: only non-chlorine bleached when needed, tumble dry low, do not use fabric softener, remove promptly, cool iron if necessary, do not dry clean.



front



back

### HOW TO MEASURE



#### BUST

Measure under the arm and around the fullest part of the bust with arms down, keeping tape horizontal.

### SIZE CHART

	XS	S	M	L	XL	2XL	3XL	4XL
Size	2	4/6	8/10	12/14	16/18	20/22	24/26	28/30
Bust	32-34	35-36	37-38	39-41	42-44	45-47	48-51	52-55

### COLOR INFORMATION



Blacktop  
PMS BLACK C



Diesel Grey  
PMS 7540C



Lilac Heather  
PMS 2054C



Petrol Grey  
Heather  
PMS COOL GRAY  
10C