



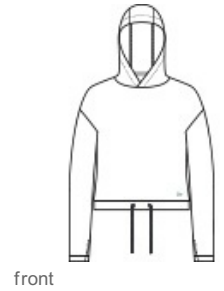
# New Era® Women's Power Long Sleeve Hoodie LNEA229

With moisture wicking and stretch, you'll feel the power of performance in this hoodie that's also brushed for comfort.

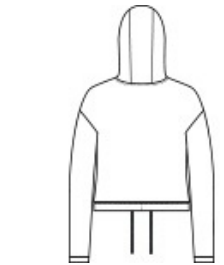
- 4.7-ounce, 91/9 polyester/spandex
- Debossed New Era neck taping
- Heat transfer label for tag-free comfort
- 3-panel hood
- Thumbholes
- High hip hem with cinch draw cords
- Reflective silver heat transfer New Era flag logo on left hem

### CARE INSTRUCTIONS

Machine Wash Cold With Like Colors. Do Not Use Fabric Softener. Only Non-Chlorine Bleach When Needed. Tumble Dry Low. Remove Promptly. Cool Iron If Necessary.



front



back

### HOW TO MEASURE



#### BUST

Measure under the arm and around the fullest part of the bust with arms down, keeping tape horizontal.

### SIZE CHART

	XS	S	M	L	XL	2XL	3XL	4XL
Size	2	4/6	8/10	12/14	16/18	20/22	24/26	28/30
Bust	32-34	35-36	37-38	39-41	42-44	45-47	48-51	52-55

### COLOR INFORMATION

Please note: PMS code information is shown only when an exact match is available.



Black  
PMS BLACK C



Shadow Grey  
Heather  
PMS COOL GREY  
10C