

PORT AUTHORITY

# Port Authority® Women's C-FREE® Double Knit Full-Zip LK881

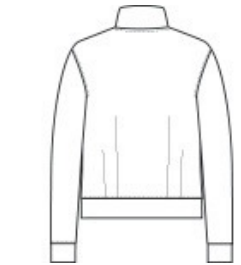


This mid weight full-zip will stand out in any work or leisure wardrobe. Not only is it easy-to-wear and layerable, but it also boasts superior stretch, snag-resistant, moisture-wicking and UV ray resistant performance.

- 7.7-ounce, 89% recycled polyester/11% spandex interlock knit (solids)
- 7.7-ounce, 81% recycled polyester/8% polyester/11% spandex interlock knit (heathers)
- Carbon footprint neutralized through the ClimeCo Certified Product™ Program
- Snag-resistant
- Moisture-wicking
- UPF rating of 50+
- Slight drop shoulder
- Dyed-to-match, recycled, molded zipper with dyed-to-match rubber-tipped pull
- Angled front pockets with stitching detail
- Self-banded cuffs and hem
- Pleats at back hem
- Tag-free label



front



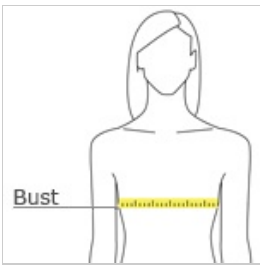
back

*Due to the nature of 100% polyester performance fabrics, special care must be taken throughout the printing process.*

### CARE INSTRUCTIONS

Machine Wash Cold With Like Colors. Do Not Use Fabric Softener. Only Non-Chlorine Bleach When Needed. Tumble Dry Low. Remove Promptly. Cool Iron If Necessary.

### HOW TO MEASURE



#### BUST

Measure under the arm and around the fullest part of the bust with arms down, keeping tape horizontal.

### SIZE CHART

	XS	S	M	L	XL	XXL	3XL	4XL
Size	2	4/6	8/10	12/14	16/18	20/22	24/26	28/30
Bust	32-34	35-36	37-38	39-41	42-44	45-47	48-51	52-55

### COLOR INFORMATION

Please note: PMS code information is shown only when an exact match is available.



Deep Black  
PMS BLACK C



Grey Steel Heather  
PMS 4287C



Smoke Grey



True Navy  
PMS 533C