

PORT AUTHORITY

# Port Authority® Ladies Microterry Cardigan LK825

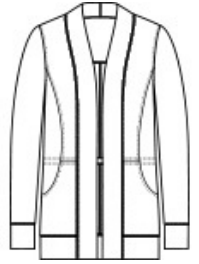


A layering must-have made of ultra-soft, snag-resistant microterry-it's as comfortable as it is polished in appearance.

- 6.8-ounce, 62/33/5 poly/rayon/spandex microterry
- Snag-resistant
- Tag-free
- Open front cardigan
- Interior draw cord w ith toggles at waist
- Front pockets
- Curved back yoke
- Front and back seaming details
- Self-pieced cuffs and hem

### CARE INSTRUCTIONS

Machine Wash Cold With Like Colors. Do Not Bleach. Tumble Dry Low. Cool Iron If Necessary.



front



back

### HOW TO MEASURE



#### BUST

Measure under the arm and around the fullest part of the bust with arms down n, keeping tape horizontal.

### SIZE CHART

|      | XS    | S     | M     | L     | XL    | XXL   | 3XL   | 4XL   |
|------|-------|-------|-------|-------|-------|-------|-------|-------|
| Size | 2     | 4/6   | 8/10  | 12/14 | 16/18 | 20/22 | 24/26 | 28/30 |
| Bust | 32-34 | 35-36 | 37-38 | 39-41 | 42-44 | 45-47 | 48-51 | 52-55 |

### COLOR INFORMATION



Aegean Blue



Charcoal  
PMS 426C



Deep Black  
PMS BLACK C



River Blue Navy  
PMS 7547C