

PORT AUTHORITY

# Port Authority® Ladies Puffer Jacket L852

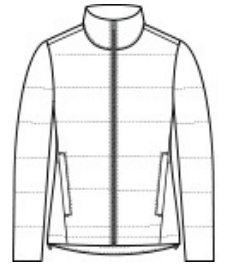


With wider baffles for a modern look, this water-resistant puffer looks cool while keeping you warm.

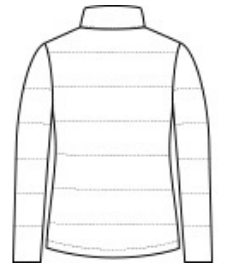
- 100% polyester shell and lining
- Molded center front zipper
- Interior storm flap
- Interior right chest pocket
- Zippered hand pockets
- Insulation method: 4.4-oz. polyfill
- Water protection method: water-repellent finish
- Port Pocket™ for decoration access
- Adjustable hem with locking draw cord

### CARE INSTRUCTIONS

Machine Wash Cold. Mild Detergent. Only Non-Chlorine Bleach When Needed. Tumble Dry Low. Cool Iron If Necessary. Do Not Dry Clean.



front



back

### HOW TO MEASURE



#### BUST

Measure under the arm and around the fullest part of the bust with arms down, keeping tape horizontal.

### SIZE CHART

	XS	S	M	L	XL	XXL	3XL	4XL
Size	2	4/6	8/10	12/14	16/18	20/22	24/26	28/30
Bust	32-34	35-36	37-38	39-41	42-44	45-47	48-51	52-55

### COLOR INFORMATION



Deep Black  
PMS BLACK C



Marshmallow  
PMS COOL GREY  
1C



Shadow Grey  
PMS COOL GREY  
10C