

PORT AUTHORITY

# Port Authority® Women's Crosshatch Easy Care Shirt. L640



With a beautiful two-color weave--not to mention wrinkle resistance--this poplin shirt has a pleasing texture and truly impresses in the office.

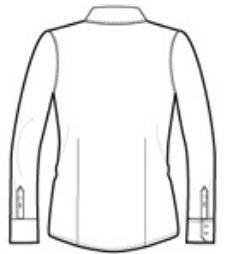
- 3-ounce, 60/40 cotton/poly
- Open collar and neckline
- Front and back darts
- Pearlized buttons
- Mitered two-button cuffs

**CARE INSTRUCTIONS**

MACHINE WASH COLD WITH LIKE COLORS, ONLY NON-CHLORINE BLEACH, TUMBLE DRY LOW, WARM IRON IF NEEDED

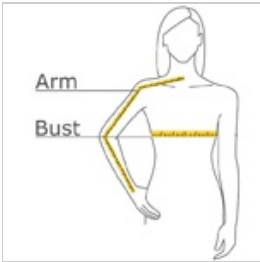


front



back

**HOW TO MEASURE**



**BUST**

Measure under the arm and around the fullest part of the bust with arms down, keeping tape horizontal.

**ARM**

Place hand on hip. Start at the center of the back of the neck and measure across the shoulder, to the elbow, and then down to the wrist.

**SIZE CHART**

	XS	S	M	L	XL	XXL	3XL	4XL
Size	2	4/6	8/10	12/14	16/18	20/22	24/26	28/30
Bust	32-34	35-36	37-38	39-41	42-44	45-47	48-51	52-55
Arm	30 - 30 3/4	30 3/4 - 31 1/2	31 1/2 - 32	32 - 32 1/2	32 1/2 - 33	33 - 33 3/8	33 3/8 - 33 3/4	33 3/4 - 34 1/2

**COLOR INFORMATION**

Please note: PMS code information is shown only when an exact match is available.



Chambray Blue  
PMS 3584C



Deep Blue  
PMS 2380C



Soft Black  
PMS BLACK C