

**SPORT-TEK®****Sport-Tek® Women's Dri-Mesh® Pro Polo. L474**

Zoned ventilation panels combine with our ultra-dry mesh moisture-wicking technology to create our coolest, most breathable polo. Stretch gussets add stretch and extra mobility.

- 4-ounce, 100% polyester mini pique on body
- 4.4-ounce, 94/6 poly/spandex stretch mesh at raglan sleeves, back and side panels
- Tag-free label
- Flat knit collar
- 5-button placket with dyed-to-match buttons
- Raglan sleeves

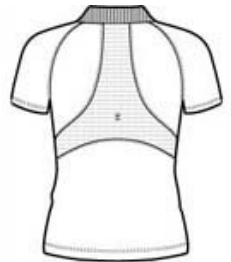
*\*Due to the nature of 100% polyester performance fabrics, special care must be taken throughout the screen printing process.*

**CARE INSTRUCTIONS**

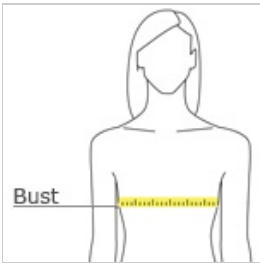
Machine wash cold with like colors, only non-chlorine bleach when needed, tumble dry low, do not use softener, remove promptly, cool iron if necessary.



front



back

**HOW TO MEASURE****BUST**

Measure under the arm and around the fullest part of the bust with arms down, keeping tape horizontal.

**SIZE CHART**

	XS	S	M	L	XL	XXL	3XL	4XL
Size	2	4/6	8/10	12/14	16/18	20/22	24/26	28/30
Bust	32-34	35-36	37-38	39-41	42-44	45-47	48-51	52-55

**COLOR INFORMATION**

**Please note: PMS code information is shown only when an exact match is available.**



Black  
PMS BLACK C



Carolina Blue  
PMS 7454C



Dark Green  
PMS 2217C



Engine Red  
PMS 703C



Maroon  
PMS 504C



Navy  
PMS 5255C



Pink Raspberry  
PMS 7425C



Royal  
PMS 654C



Steel  
PMS C1 GY 11 C



White