

PORT AUTHORITY

# Port Authority® Ladies Essential Rain Jacket L407



A year-round must-have, this fully seam-sealed 8K/5K waterproof, breathable 2.5-layer jacket has a DWR finish. It packs easily and gives great water-repellent, wind-resistant performance.

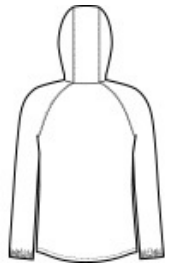
- 100% polyester shell bonded to a waterproof laminate film with DWR finish
- 8,000MM fabric waterproof rating
- 5,000G/M2 fabric breathability rating
- Interior grid print
- Waterproof center front zipper
- Interior storm flap with chin guard
- Front zippered pockets
- Elastic cuffs

### CARE INSTRUCTIONS

Machine wash cold with like colors. Only non-chlorine bleach when needed. Tumble dry low. Cool iron if necessary. Do not Dry Clean.



front



back

### HOW TO MEASURE



#### BUST

Measure under the arm and around the fullest part of the bust with arms down, keeping tape horizontal.

### SIZE CHART

	XS	S	M	L	XL	XXL	3XL	4XL
Size	2	4/6	8/10	12/14	16/18	20/22	24/26	28/30
Bust	32-34	35-36	37-38	39-41	42-44	45-47	48-51	52-55

### COLOR INFORMATION



Deep Black  
PMS BLACK C



Graphite  
PMS 432C



Light Cyan Blue  
PMS 638C



True Navy  
PMS 533C



True Royal  
PMS 7687C