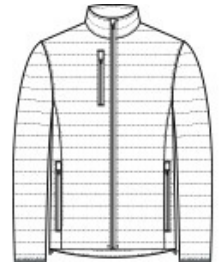


Staying warm while on the go has never been easier with our Packable Puffy Jackets. Thanks to a water-repellent fabric coating and finish, you'll remain comfortable no matter where your day takes you.

- 100% polyester shell and lining
- 2.4-ounce, 100% polyfill insulation
- Interior storm flap with chin guard
- Reverse coil zippers with rubber-wrapped zipper pulls
- Zippered chest pocket
- Front zippered pockets
- Elastic binding at cuffs
- Adjustable locking draw cord at hem
- Port Pocket® for decoration access
- Dyed-to-match draw string carrying pouch included

**CARE INSTRUCTIONS**

Machine wash cold with like colors. Do not bleach. Tumble dry low. Cool iron. Do not use fabric softener. Do not dry clean.



front



back

**HOW TO MEASURE**



**CHEST WIDTH**

Measure under the arm and around the fullest part of the chest with arms down, keeping tape horizontal.

**SIZE CHART**

	XS	S	M	L	XL	2XL	3XL	4XL
Chest	32-34	35-37	38-40	41-43	44-46	47-49	50-53	54-57

**COLOR INFORMATION**



Cobalt Blue  
PMS 7687C



Deep Black  
PMS BLACK C



Fire Red/ Graphite  
PMS 202C



Regatta Blue/  
River Blue Navy  
PMS 2380C



Sterling Grey/  
Graphite  
PMS 7540C