

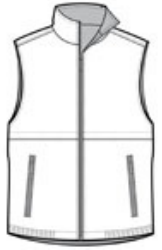
PORT AUTHORITY

# Port Authority® Reversible Charger Vest. J7490



Two versatile looks for one great price! This reversible vest has a Taslan shell for wind-resistant, water-repellent performance and a heavy weight fleece side to keep you warm.

- 100% polyester Taslan shell
- 6.8-ounce, 100% polyester fleece body lining
- Woven label located inside left hand pocket
- Front and back vents for easy decoration access
- Front zippered pockets on Taslan side
- Open pockets on fleece side
- Elastic hem



front



back

## HOW TO MEASURE



### CHEST WIDTH

Measure under the arm and around the fullest part of the chest with arms down, keeping tape horizontal.

## SIZE CHART

	XS	S	M	L	XL	2XL	3XL	4XL	5XL	6XL
Chest	32-34	35-37	38-40	41-43	44-46	47-49	50-53	54-57	58-60	61-64

## COLOR INFORMATION



Battleship Grey/  
Black



True Black/ Black  
PMS BLACK C



True Navy/ True  
Navy  
PMS 533C