

PORT AUTHORITY

# Port Authority® Active Colorblock Soft Shell Jacket. J718



When it's time to get active, this soft shell won't back down. With modern colorblocking on the collar, shoulders and sleeves, this budget-friendly jacket performs with wind- and water-resistance and easy-moving stretch.

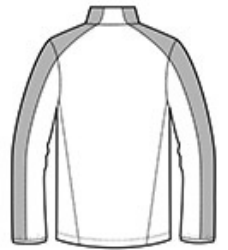
- 100% polyester knit shell bonded to a water-resistant film insert and a 100% polyester mesh interior
- 1000MM fabric waterproof rating
- 1000G/M<sup>2</sup> fabric breathability rating
- Full-length interior storm flap with chin guard
- Reverse coil center front zipper
- Front zippered pockets
- Elastic binding at cuffs
- Open hem with adjustable locking draw cord

#### CARE INSTRUCTIONS

Machine wash cold. Gentle cycle. Tumble dry low. Cool iron if needed. Do not bleach. Do not dry clean.



front



back

#### HOW TO MEASURE



#### CHEST WIDTH

Measure under the arm and around the fullest part of the chest with arms down, keeping tape horizontal.

#### SIZE CHART

	XS	S	M	L	XL	2XL	3XL	4XL
Chest	32-34	35-37	38-40	41-43	44-46	47-49	50-53	54-57

#### COLOR INFORMATION



Deep Black/ Grey  
Steel  
PMS Black C



Dress Blue Navy/  
Grey Steel  
PMS 533 C