

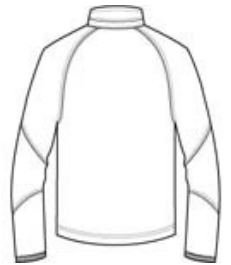


Perfect for everyday wear, our soft shell jackets have an understated texture that make them a bit more sophisticated than other soft shells. Super soft with stretch, these wind-resistant, water-repellent jackets deliver pure comfort. The raglan silhouette gives you optimum range of motion, while the angled zippered chest pocket adds visual appeal.

- 96/4 poly/spandex w oven shell bonded to 100% polyester microfleece w ith laminated film insert to repel w ater and w ind
- 1000MM fabric w aterproof rating
- 1000G/M² fabric breathability rating
- Storm flap w ith chin guard
- Ergonomic zipper pulls
- Zippered chest pocket
- Front zippered pockets
- Spandex-trimmed cuffs
- Port Pocket™ for decoration access
- Open hem w ith draw cord and toggles



front

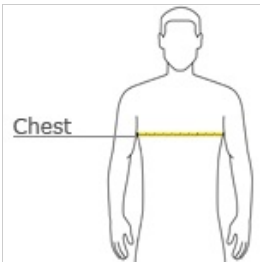


back

CARE INSTRUCTIONS

Machine wash cold with like colors. Only non-chlorine bleach if needed. Tumble dry low, remove promptly. Cool iron if necessary.

HOW TO MEASURE



CHEST WIDTH

Measure under the arm and around the fullest part of the chest with arms down, keeping tape horizontal.

SIZE CHART

	XS	S	M	L	XL	2XL	3XL	4XL
Chest	32-34	35-37	38-40	41-43	44-46	47-49	50-53	54-57

COLOR INFORMATION



Black
PMS BLACK C



Insignia Blue
PMS 2378C