

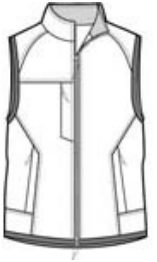
PORT AUTHORITY

DISCONTINUED Port Authority® Challenger™ Vest. J355

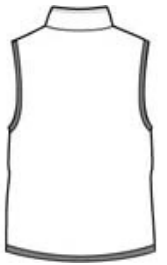


The versatile Challenger™ Vest has spandex-trimmed armholes and hem for long-wearing durability.

- Teklon® nylon shell
- 8.3-ounce, 100% polyester fleece body lining
- Double-needle stitching throughout
- Slash zippered pockets
- Port Pocket™ for easy embroidery access
- Binding at armholes and hem

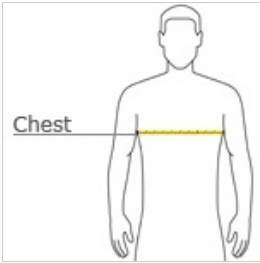


front



back

HOW TO MEASURE



CHEST WIDTH

Measure under the arm and around the fullest part of the chest with arms down, keeping tape horizontal.

SIZE CHART

	XS	S	M	L	XL	2XL	3XL	4XL
Chest	32-34	35-37	38-40	41-43	44-46	47-49	50-53	54-57

COLOR INFORMATION