

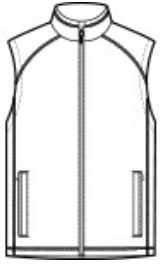


The comfort of a sweater joins the unbeatable warmth of fleece in these modern styles. Contrast binding at the pockets heightens the visual appeal.

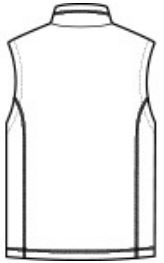
- 8.8-ounce, 100% polyester sweater fleece
- Twill-taped neck
- Reverse coil zipper
- Chin guard
- Full-length interior storm flap
- Front reverse coil zippered pockets with binding trim
- Knotted zipper pulls

**CARE INSTRUCTIONS**

Machine wash cold. Gentle cycle with like colors. Non chlorine bleach when needed. Tumble dry low. Remove promptly. Do not iron.



front



back

**HOW TO MEASURE**



**CHEST WIDTH**

Measure under the arm and around the fullest part of the chest with arms down, keeping tape horizontal.

**SIZE CHART**

	XS	S	M	L	XL	2XL	3XL	4XL
Chest	32-34	35-37	38-40	41-43	44-46	47-49	50-53	54-57

**COLOR INFORMATION**



Black Heather  
PMS BLACK C



Grey Heather  
PMS 424C