



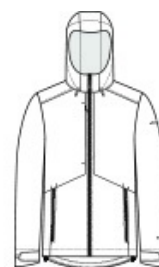
# Eddie Bauer® WeatherEdge® Plus Jacket EB560



Fully seam-sealed and engineered from extremely waterproof, breathable 10K/10K fabric, this jacket helps ensure warmth and comfort no matter what Mother Nature serves up. Designed with stretch, it features exclusive WeatherEdge Plus and StormRepel® durable water-repellent (DWR) technology for unparalleled protection against rain, snow, sleet and hail. Adjustable hood with locking draw cord, waterproof front molded zippered pockets, adjustable tab cuffs with hook and loop closures, decoration access pocket. Full-length interior storm flap. Adjustable locking draw cord hem. Contrast Eddie Bauer heat transfer logo at left shoulder. Contrast WeatherEdge Plus heat transfer logo on left cuff. Made of 92/8 poly/spandex with 100% polyester lining.

### CARE INSTRUCTIONS

Machine Wash Cold Separately Or With Like Colors. Only Non-Chlorine Bleach When Needed. Tumble Dry Low. Do Not Iron.

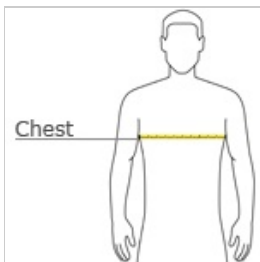


front



back

### HOW TO MEASURE



#### CHEST WIDTH

Measure under the arm and around the fullest part of the chest with arms down, keeping tape horizontal.

### SIZE CHART

	XS	S	M	L	XL	2XL	3XL	4XL
Chest	32-34	35-37	38-40	41-43	44-46	48-50	52-54	55-57

### COLOR INFORMATION

Please note: PMS code information is shown only when an exact match is available.



Cobalt Blue  
PMS BLACK C



Deep Black  
PMS 7540C



Iron Gate  
PMS 654C