



Eddie Bauer® Women's WeatherEdge® Jacket. EB559



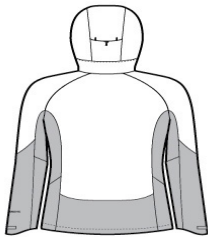
Two element-fighting WeatherEdge 5K/5K fabrics come together in this jacket for highly waterproof, breathable performance. Fully seam-sealed, this jacket also features an exclusive StormRepel® durable water-repellent (DWR) coating for additional weather protection. Four-way stretch for easy mobility. Adjustable hood with locking draw cord, waterproof molded front zippered pockets, adjustable tab cuffs with hook and loop closures. Decoration access pocket. Adjustable locking draw cord hem. Contrast WeatherEdge logo heat transfer on left sleeve. Contrast Eddie Bauer logo heat transfer on right hem. Made of 94/6 poly/spandex and 92/8 poly/spandex.

CARE INSTRUCTIONS

Machine wash cold with like colors, only non-chlorine bleach when needed, tumble dry low, warm iron if necessary.



front



back

HOW TO MEASURE



BUST
Measure under the arm and around the fullest part of the bust with arms down, keeping tape horizontal.

SIZE CHART

	XS	S	M	L	XL	2XL	3XL	4XL
Size	2	4/6	8/10	12/14	16/18	20/22	24/26	28/30
Bust	32-33	34-35	36-37	38-40	41-43	44-46	47-49	50-52

COLOR INFORMATION

Please note: PMS code information is shown only when an exact match is available.



Black
PMS BLACK C



Cobalt Blue/ River
Blue Navy
PMS 654C



Metal Grey/ Grey
Steel
PMS COOL GREY
10C