



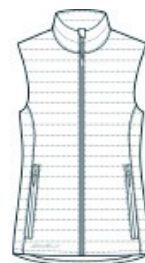
# Eddie Bauer® Women's Packable Quilted Vest EB517



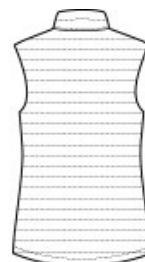
Designed with traditional quilt lines, this insulated vest is built for warmth and weather-resistant performance. Features include full-length interior storm flap with chin guard, exposed, molded zippers with Eddie Bauer logo pulls, zippered hand pockets and a slight drop tail hem. Includes an embroidery access pocket. Packs into zippered left hand pocket. Contrast Eddie Bauer heat transfer logo on right hem. Made of 100% polyester ripstop and 3-ounce, 100% polyester blown fill. PU coating on back of shell. Durable water-repellent (DWR) finish.

### CARE INSTRUCTIONS

Machine Wash Cold With Like Colors. Do Not Use Fabric Softener. Do Not Bleach. Tumble Dry Low. Cool Iron, if Necessary. Do Not Dry Clean.

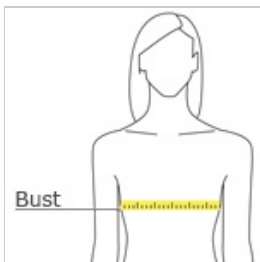


front



back

### HOW TO MEASURE



### BUST

Measure under the arm and around the fullest part of the bust with arms down, keeping tape horizontal.

### SIZE CHART

	XS	S	M	L	XL	2XL	3XL	4XL
Size	2	4/6	8/10	12/14	16/18	20/22	24/26	28/30
Bust	32-33	34-35	36-37	38-40	41-43	44-46	47-49	50-52

### COLOR INFORMATION

Please note: PMS code information is shown only when an exact match is available.



Adriatic Blue  
PMS 2377C



Black  
PMS Black C



Metal Grey  
PMS COOL GRAY  
10C