



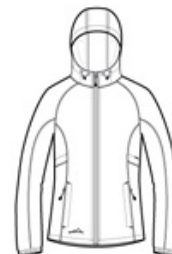
Ladies Packable Wind Jacket. EB501



Wind w as the inspiration for this compact layer.Plus, it packs dow n into its ow n logoed pocket, making it easy to carry w herever you go. Hood w ith locking draw cords for adjustability, contrast reverse coil zipper, underarm vents, front zippered pockets w ith packable right pocket, elastic cuffs and an open hem. Contrast Eddie Bauer logo on right hem. Made of 100% nylon.

CARE INSTRUCTIONS

Secure all garment before laundering Machine w ash w arm delicate separately Use mild detergent rinse throughly Do not bleach Tumble dry low or for best result line dry Do not iron. Do not dry clean

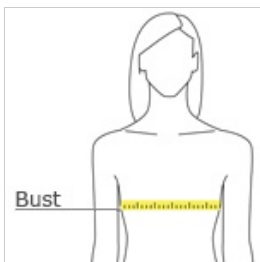


front



back

HOW TO MEASURE



BUST

Measure under the arm and around the fullest part of the bust w ith arms dow n, keeping tape horizontal.

SIZE CHART

| | XS | S | M | L | XL | 2XL | 3XL | 4XL |
|------|-------|-------|-------|-------|-------|-------|-------|-------|
| Size | 2 | 4/6 | 8/10 | 12/14 | 16/18 | 20/22 | 24/26 | 28/30 |
| Bust | 32-33 | 34-35 | 36-37 | 38-40 | 41-43 | 44-46 | 47-49 | 50-52 |

COLOR INFORMATION



Adriatic Blue
PMS 2377C



Black
PMS BLACK C



Grey Steel
PMS 7540C