



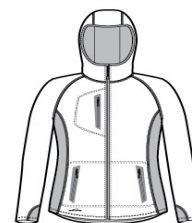
## Eddie Bauer® Ladies Sport Hooded Full-Zip Fleece Jacket. EB245



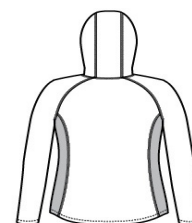
This sporty midweight jacket pairs smooth-faced fleece with stretch side panels for comfort during active adventures. Three-panel hood with contrast lining. Reverse coil zippers, welded zippered contrast pockets. Contrast Eddie Bauer heat transfer logo on right hem. Made of 7.7-ounce, 100% polyester diamond dobby fleece with an anti-pill finish inside. 88/12 poly/spandex side panels.

### CARE INSTRUCTIONS

Machine wash cold with like colors, only non-chlorine bleach when needed, tumble dry low, warm iron if necessary.

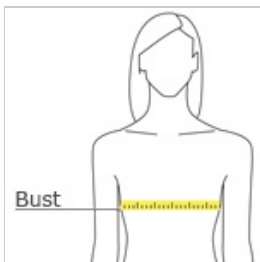


front



back

### HOW TO MEASURE



#### BUST

Measure under the arm and around the fullest part of the bust with arms down, keeping tape horizontal.

### SIZE CHART

	XS	S	M	L	XL	2XL	3XL	4XL
Size	2	4/6	8/10	12/14	16/18	20/22	24/26	28/30
Bust	32-33	34-35	36-37	38-40	41-43	44-46	47-49	50-52

### COLOR INFORMATION