



# District® Women's Perfect Tri® Rocker Tank. DT137L



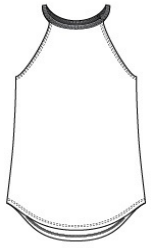
Turn up the volume in this tank with its perfect mix of softness and attitude.

- 4.5-ounce, 50/25/25 poly/combed ring spun cotton/rayon, 32 singles
- 2X1 rib knit at neck
- Tear-away label
- Curved hem

*Tri-Blend fabric infuses each garment with unique character. Please allow for slight color variations. Due to the heat sensitivity of tri-blend fabrics, special care must be taken throughout the printing process. Consult your decorator or ink supplier for best printing practices.*

## CARE INSTRUCTIONS

Machine wash cold, with like colors. Only non-chlorine bleach. Tumble dry low. Warm iron if necessary.



front



back

## HOW TO MEASURE



### BUST

Measure under the arm and around the fullest part of the bust with arms down, keeping tape horizontal.

## SIZE CHART

	XS	S	M	3XL	4XL	L	XL	XXL
Size	2	4/6	8/10	24/26	28/30	12/14	16/18	20/22
Bust	32-34	35-36	37-38	48-51	52-55	39-41	42-44	45-47

## COLOR INFORMATION

Please note: PMS code information is shown only when an exact match is available.



Black  
PMS BLACK C



Black Frost  
PMS 426C



Blush Frost  
PMS 2341C



Desert Tan Heather  
PMS 4269C



Grey Frost  
PMS COOL GREY  
11C



Heathered  
Eucalyptus Blue  
PMS 7475C



Military Green  
Frost  
PMS 7771C



Navy Frost  
PMS 2379C



Red Frost  
PMS 200C



White