



# District® Women's Perfect Tri® Fleece Short DT1309

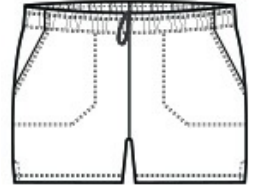


Like its namesake-the iconic Perfect Tri Tee-our Perfect Tri Fleece blends three yarns for an unbelievably soft short at an unbeatable value.

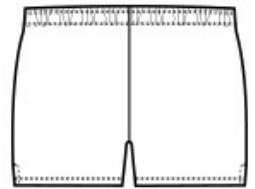
- 7-ounce, 54/40/6 poly/combed ring spun cotton/rayon
- Mitered front pockets
- Self-fabric elastic waistband with dyed-to-match interior draw cord
- Side seamed
- 3-inch inseam, size medium
- Tear-away label

### CARE INSTRUCTIONS

Machine Wash Cold With Like Colors. Only Non-Chlorine Bleach When Needed. Tumble Dry Low. Cool Iron if Necessary.

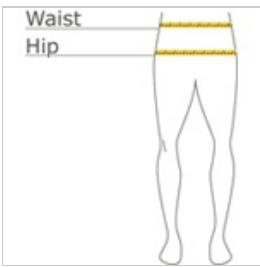


front



back

### HOW TO MEASURE



#### WAIST

Measure around the smallest part of the natural waist.

#### HIPS

With feet together, measure around the fullest part of hips, keep tape horizontal.

### SIZE CHART

	XS	S	M	L	XL	XXL	3XL	4XL
Size	2	4/6	8/10	12/14	16/18	20/22	24/26	28/30
Waist	24-26	27-28	29-30	31-33	34-36	37-39	40-43	44-47
Hip	34-36	37-38	39-40	41-43	44-46	47-49	50-53	54-57

### COLOR INFORMATION

Please note: PMS code information is shown only when an exact match is available.



Black  
PMS BLACK C



Grey Frost  
PMS COOL GREY  
11C